

Instruction Manual



Westinghouse
Security Systems

WSS55O8
LED Security Station
Version 1.0

Introduction

The LED Security Station provides easy to understand information about the status of your security system by lighting words corresponding to important functions on the LED display. Access to your system's functions is thus rendered simple; the only information you must memorize is your Master Security Code and any additional Security Codes you have programmed into the system.

The keypad sounding device provides audible feedback each time a key is pressed. With unique audible sequences, it signals troubles and the correct or incorrect entry of information.

About Your Security System

Your Westinghouse security equipment has been designed to give you the greatest possible flexibility and convenience. Read this manual carefully and have your installer instruct you on system operation and on which features have been implemented on your system. All users of this system should be equally instructed in its use. Fill out the System Information page and store this manual in a safe place for future reference.

Fire Detection

This equipment is capable of monitoring fire detection devices such as smoke detectors and providing a warning alarm if a fire condition is detected. Good fire detection depends on having adequate numbers of fire detectors placed in appropriate locations. This equipment should be installed in accordance with NFPA 72 (N.F.P.A. One Batterymarch Park, Quincy MA 02269). Carefully review the Family Escape Planning guidelines in this manual.

Note: Your installer must enable the fire detection portion of this equipment before it becomes functional.

IMPORTANT NOTE

A security system cannot prevent emergencies. It is only intended to alert you and, if included, a monitoring station of an emergency situation. Security systems are generally very reliable but they may not work under all conditions and they are not a substitute for prudent security practices or life and property insurance. Your security system should be installed and serviced by qualified security professionals who should instruct you on the level of protection that has been provided and on system operation.

The control panel has been listed for commercial burglary, residential fire and Grade A residential burglary applications by Underwriters Laboratories.

Testing

To insure that your system continues to function as intended, it is important that you test the system weekly. See the testing procedure elsewhere in this manual. If your system does not function properly, call Westinghouse Customer Service at 1-800-654-6770.

Monitoring

This system is capable of transmitting alarms, troubles, and emergency information over telephone lines to a monitoring station.

Note: The monitoring feature must be enabled by the installer before it becomes functional.

General System Operation

Your security system is made up of a Westinghouse control panel, one or more LED security stations and various detectors and sensors. The Westinghouse control panel will be mounted out of the way in a utility room or closet. The metal cabinet contains the system electronics, fuses and stand-by battery. There is normally no reason for anyone but the WSS installer or service person to have access to the control panel. The LED keypads have an audible indicator and command entry keys. The keypad is used to send commands to the system and to display the current system status. The security station(s) will be mounted in convenient locations inside the protected premises close to the exit-entry doors.

The security system has several zones or areas of protection and each of these zones will have one or more detection sensors connected to it (motion detectors, glassbreak detectors, door contacts or shock sensors). When a sensor is in alarm, the zone in alarm will be displayed on the LED security station.

Master Code

The Master Code is used for arming and disarming the security system, programming additional security codes and changing other features. The Master Code will be supplied to you by your installer. If enabled by your installer, the Master Code can be changed at any time. (See Programming Security Codes section.)

Maintenance

With normal use, the system requires minimum maintenance. The following points should be observed.

1. Do not wash the security station with a wet cloth. Light dusting with a barely damp cloth should remove normal accumulations of dust.
2. The battery/bell test is designed to determine battery condition, however it is recommended that the stand-by batteries be replaced every three years.

System Information

This system includes:

_____ Control Panel model _____
_____ Security Station(s) model _____
_____ Remote keypad(s) model _____

Master Security Code: 40 _____




There are _____ codes available on this system.

Additional Security Codes

01 _____	09 _____	17 _____	25 _____
02 _____	10 _____	18 _____	26 _____
03 _____	11 _____	19 _____	27 _____
04 _____	12 _____	20 _____	28 _____
05 _____	13 _____	21 _____	29 _____
06 _____	14 _____	22 _____	30 _____
07 _____	15 _____	23 _____	31 _____
08 _____	16 _____	24 _____	32 _____

Duress Codes: 33 _____ 34 _____

There are _____ active zones on this system.

Zone	Protected Area	Zone Type
01	_____	_____
02	_____	_____
03	_____	_____
04	_____	_____
05	_____	_____
06	_____	_____
07	_____	_____
08	_____	_____
FIRE	_____	_____
	_____	Keypad Fire Zone
	_____	Keypad Auxiliary Zone
	_____	Keypad Panic Zone

Customer Service

Account Identification Number: _____

For service, call 1-800-654-6770

Arming

When arming your system, check to see that all zones are secure by closing all doors/windows and stopping motion in areas covered by motion detectors. If all zones are secure, the Ready light will be ON. If a zone will not clear, it may be bypassed to allow partial arming.

Note: A bypassed zone reduces your protection. If a zone cannot be cleared, call Westinghouse Customer Service at 1-800-654-6770.

Before arming, check to see that the system is clear of troubles and that there are no zones bypassed. The system may be armed with zones bypassed and/or trouble conditions present but to do so will compromise protection. Check to see which zones are bypassed and whether they are intentionally bypassed. If a trouble is present, see the Trouble Conditions section in this manual.

When the Ready light is ON and all bypassed zones and trouble conditions have been addressed, the system can be armed using one of the following three methods.

Stay Arming

The system will be armed with all interior zones bypassed so that users can remain within the premises while it is armed. The perimeter zones will be armed. To arm in the Stay mode, press and hold the STAY key for two seconds.

Away Arming

The system will be armed with all interior zones and perimeter zones active. If motion is detected on the interior zones, the alarm sequence will begin. To arm in the Away mode, press and hold the AWAY key for two seconds.

Once you have armed the system, exit the premises through the door indicated by Westinghouse Security Systems as the Exit/Entry door. Once the exit delay expires, the system will be armed.

Arming without Entry Delay

The system will be armed with all interior zones bypassed so that users can remain within the premises while it is armed. The perimeter zones including Exit/Entry doors will be Instant, meaning that anyone who enters the premises will cause an immediate alarm. There will be no entry delay when these zones are opened. To arm without entry delay, enter [*] [9] followed by your access code.

Disarming

Enter the premises only through the door(s) designated by your installer as the entry door(s). Entering by any other door will sound an immediate alarm.

When you enter through the designated entry door, the keypad will begin to sound an audible warning. Enter your security code.

If an error is made in entering the code, press the [#] key and enter the code again. The correct security code must be entered before the "entry" time expires or the system will go into alarm. Your installer can change the entry time. If no alarms occurred while the panel was armed, and there are no troubles, the audible warning will end.

Upon disarming, if an alarm occurred during the period the system was armed, the Memory light will turn on. The zone(s) in which the alarm occurred will be indicated by their corresponding numbers flashing. If the zone is still in alarm after disarming, the zone light will stay lit.

Upon disarming, if an alarm is present, the Trouble light will turn on. Please refer to the Viewing Trouble Conditions section in this manual for more information on Troubles.

If an Alarm Sounds

Fire Alarm

If your system has been installed with fire detectors and the alarm sounds in a pulsing mode, follow your emergency evacuation plan immediately. See guidelines for Family Escape Planning elsewhere in this manual.

Intrusion Alarm

If an intrusion alarm sounds (continuous bell/siren), the alarm may be silenced by entering your security code.

You may determine the source of the alarm by going to the Alarm Viewing section. Once the source of the alarm has been corrected, the panel can be restored to its original armed state.

Zone Bypassing

Use zone bypassing when access is needed to part of the protected area while the system is "armed". Bypassed zones will not cause an alarm. Zones that are temporarily out of service due to damaged wiring or contacts may be bypassed to allow system arming (partial protection) until repairs can be made.

To bypass a zone, start with the panel in the disarmed state.

Press [*] [1] to enter the bypass mode.

Enter zone number [01] to [08] to bypass an individual zone.

To remove a zone bypass, enter the zone number and the corresponding zone light will extinguish, indicating that the zone is no longer bypassed.

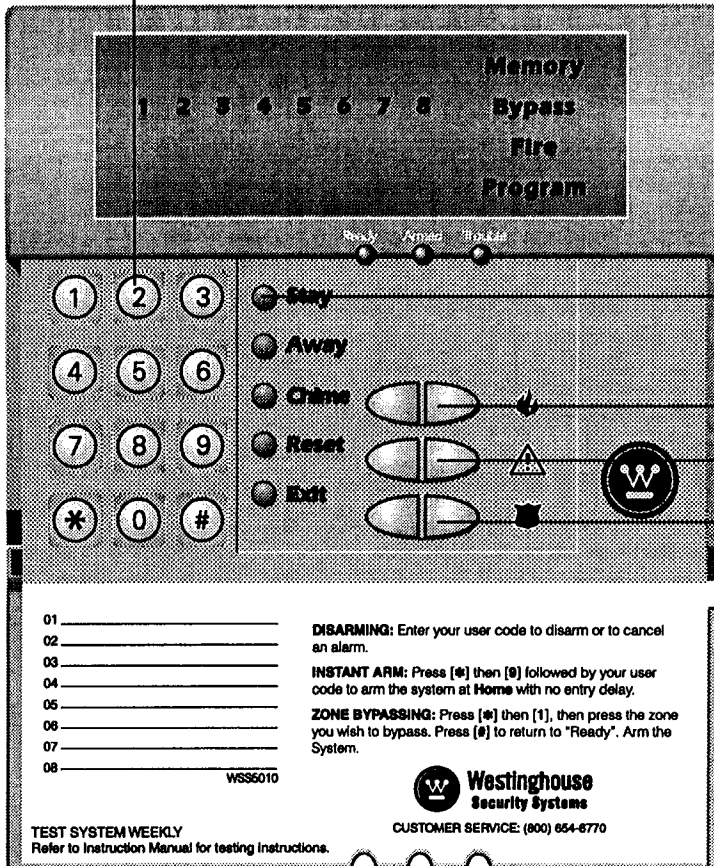
To exit the bypass mode, press the [#] key.

Zone bypasses are automatically removed each time the system is disarmed and must be re-applied before the next arming.

Note: For security reasons your installer may program the system to prevent the bypass command from operating on certain zones.

LED Keypad Controls

Keypad – Press the keys to view alarms or troubles, to Arm/Disarm the system or to bypass zones. To exit, press [#]; to select a function, press [*].



Function Keys allow easy single button activation of the most commonly used features.

Press both 🔥 Keys for 2 seconds to send a Fire transmission.

Press both ⚠️ Keys for 2 seconds to send an Auxiliary transmission.

Press both 🚒 Keys for 2 seconds to send a Panic transmission.

Important Note:

The Fire, Auxiliary and Panic keys will NOT function unless programmed by the installer. If these keys are in service and the installer has enabled audible feedback, holding down the key for 2 seconds will cause the keypad sounder to beep indicating that the input has been accepted and transmission is underway.

Important Note

Test system weekly and have system trouble conditions corrected by installer.

Viewing Trouble Conditions

The control panel continuously monitors a number of possible trouble conditions. If one of these conditions occur, the keypad buzzer will beep twice every 10 seconds.

If the panel is armed when the trouble occurs, the keypad will beep. If it is a fire zone trouble, the Trouble light will also turn ON. Enter your security code to disarm the panel. The keypad buzzer will stop beeping.

If the panel is disarmed when the trouble occurs, the keypad sounder will beep twice every 10 seconds. Pressing any key will silence the keypad buzzer.

Press [*] [2] to view the trouble. The Trouble light will be on as well as the zone lights corresponding to the troubles which have occurred.

The Trouble conditions are as follows:

Light 1 ON: Service required

Press [1] and one or more of the following numbers will be lit, indicating the type of service required:

1. Low Battery
2. Bell Circuit Trouble
3. General System Trouble
4. General System Tamper
5. General System Supervisory
6. WSS5204 Low Battery
7. WSS5204 AC Fail

Light 2 ON: AC Failure

Light 3 ON: Telephone Line Trouble

Light 4 ON: Failure to Communicate

Light 5 ON: Zone Fault (Fire Zone Fault)

Press [5] and the numbers corresponding to the faulted zones will be ON.

Light 6 ON: Zone Tamper

Press [6] and the numbers corresponding to the tampered zones will be ON.

Light 7 ON: Zone Low Battery

Press [7] and the numbers corresponding to the zones with battery trouble will be ON.

Light 8 ON: Loss of System Time

The internal time of day clock needs to be set to the correct time. This trouble is cleared when an attempt is made to reset the clock.

Press the [#] key to exit the trouble view mode. The Trouble light will remain on until the trouble condition is cleared. **Note: A Trouble condition reduces the security your system is designed to provide. Call Westinghouse Customer Service for assistance.**

Testing

It is recommended that the system be tested weekly.

1. Inform the monitoring station that you are testing.
2. Disarm the system. In the disarmed mode, the ready light should be on.
3. Perform a Bell/Battery test by pressing [*] [6] [Master Code] [4]. The Bell and keypad buzzer will sound for two seconds. Press [#] to exit.
4. Activate each sensor in turn, e.g. open door or window, walk in a motion detector area. As each zone is activated, their corresponding zone light will be activated. Restore the sensor to normal, close door/window or stop motion, and the keypad will return to the Ready state.
5. If the FIRE zone is enabled, activation will cause the signal to sound pulsing. **Caution: Do not use open flame or burning materials to test a smoke or heat detector. Contact your installer for information on safe methods of testing detectors.**
6. Should the system fail to function properly, call Westinghouse Customer Service.
7. When testing is complete, call and advise the monitoring station.

Note: Not all features described will be functional unless disabled by your installer. Please ensure that your installer has advised you which features are functional on your system.

Keypad Zones

There are keys on the keypad labelled  (Fire),  (Auxiliary) and  (Panic). These keys are only functional if they have been programmed by the installer.

Fire

Holding these keys down for **two seconds** will sound a fire Alarm. The alarm will sound pulsing and a transmission will be sent to the monitoring station. The keypad sounder will sound three beeps once the panel has accepted the alarm. A short series of beeps indicates that the transmission was successful.

Auxiliary

Holding these keys down for **two seconds** will send a transmission to the monitoring station. The keypad sounder will sound three beeps once the panel has accepted the alarm and begun the transmission. A short series of beeps on the keypad will indicate that the transmission was successful.

Panic

Holding these keys down for **two seconds** will send a transmission to the monitoring station. The keypad sounder will sound three short beeps once the panel has accepted the alarm and begun the transmission, if the installer chooses to make acknowledgements audible. The installer can program this key to sound the alarm or to transmit the alarm silently.

Door Chime Feature

The Door Chime feature provides a tone from the security station each time a monitored door or window is opened or closed. The zones which will activate the Door Chime must be programmed by your installer. The Door Chime only sounds while the system is in the disarmed state.

If zones have been programmed to initiate the Door Chime, press [*] [4] to enable or disable the Door Chime feature.

When the command is entered, the keypad sounder will beep three times if the Door Chime is enabled and will sound one long beep if it is being disabled.

Alarm Test

The Alarm Test provides two second test of the keypad sounder and bell/siren. Start with the panel in the disarmed mode, press [*] [6] [Master Code] [4] to perform a Bell Test.

Press [#] to exit.

Alarm Memory Display

The system is designed to remember alarms that occur while the system was armed. Upon disarming and if an alarm has occurred, the Memory light will turn on. The zone(s) which caused the alarm will be illuminated on the keypad.

Press [*] [3] to view other alarms.

Press [#] to exit.

Function Keys

To arm the system in the **Away** mode, press and hold the AWAY key for two seconds. The keypad will sound a single beep followed by three beeps. The Armed light will turn ON and the keypad will begin sounding audible exit tones. The system will be armed with all zones active.

To arm the system in the **Stay** mode, press and hold the STAY key for two seconds. The keypad will sound a single beep, followed by three beeps. The Armed light will turn ON but there will not be audible exit tones. The system will be armed with only the perimeter zones active.

To turn the **Chime** feature ON or OFF, press and hold the CHIME key for two seconds. When the key is pressed, the keypad sounder will beep three times if the feature is being turned ON; it will sound one long beep if the feature is being turned OFF. With this feature ON, the keypad will chime when an Entry/Exit door is opened.

To **Reset** smoke detectors, press and hold the RESET key for two seconds. This will cause the system to reset the smoke detectors for five seconds.

To perform the **Quick Exit** function, press and hold the EXIT key for two seconds. This will allow you to open and close the Entry/Exit door without causing an alarm. The door must be shut after it is opened.

Programming Security Codes

Master Code (User 40)

The installer can program the system to allow a changeable Master Code. If your system is set as such, follow the instructions below to change the Master Code.

- While the system is disarmed, press [*] [5] followed by your existing Master Code.
- Select User Code #40 (Master) by entering [4] [0].
- Enter the new four-digit Master code.
- Press [#] to exit.
- Record the new Master Code on the System Information page in this booklet.

For example, to program a new Master Code of 9753, enter [*] [5]...[Master Code]...[40]...[9][7][5][3].

Additional User Codes (01 to 32)

Up to 32 additional User Codes may be programmed. To program additional User Codes, enter [*] [5] followed by the Master Code. Then perform the following:

- Select the User Code number (01 to 32).
- Enter the new four-digit User Code.
- Press [#] to exit.
- Record the new User Code on the System Information page in this booklet.

For example, to program a new Master Code of 9753, enter [*] [5]...[Master Code]...[40]...[9][7][5][3].

Deleting a User Code

A User Code can be deleted by replacing the User Code with four [*]'s.

For example, to erase a User Code, enter [*] [5]...[Master Code]...[40]...[*][*][*][*].

Duress Codes (33 and 34)

Your system allows for two security codes which when entered transmit a duress message to your monitoring station. Ask your installer for more information regarding duress codes.

For example, to program a Duress Code of 9911, enter [*] [5]...[Master Code]...[33]...[9][9][1][1].

Remember to record your new code on the System Information page in this booklet.

Notes: Use digits 0 through 9 only for programming codes

When in the User Code programming mode, the Armed light will be ON and the Ready light will be OFF.

When in the User Code Option programming mode, the Armed light will be OFF and the Ready light will be ON.

Setting the System Date and Time

To set the system time, enter [*] [6] followed by the Master Code.
Now press the [1] key. The keypad will now accept 10 consecutive digits.

- Enter the Time in Hours and Minutes using the 24 Hour format (00:00 to 23:59).
- Enter the Date in Months, Days and Years (MM DD YY).

Fire Alarm Operation

Alarm

Upon activation, the bell/siren will pulse.

The digital communicator transmission is delayed for 30 seconds. If the alarm is not acknowledged (silenced) within 30 seconds, the communicator will transmit to the monitoring station.

Silence

To silence the bell/siren press the [#] key.

If the alarm is silenced within 30 seconds, transmission to the monitoring station will be aborted.

If the alarm is silenced and the smoke detector is not reset, the alarm will resound after 90 seconds.

Reset

To restore the smoke detector to normal, press [*] [7] [2].

The panel will attempt to reset the smoke detector

If the detector is clear of smoke the system will return to normal.

Note: If a fire condition is apparent, follow your evacuation plan immediately. If the alarm sounds at night evacuate immediately.

Fire Safety in the Home

Most fires occur in the home and to minimize this danger it is recommended that a household fire safety audit be conducted and a family escape plan be developed.

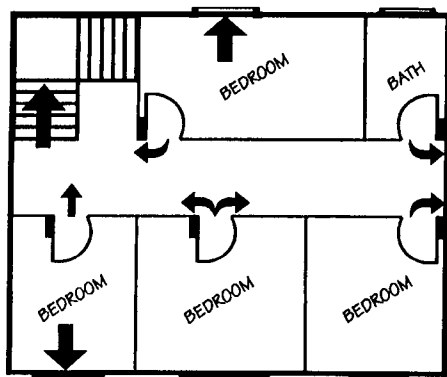
Household Fire Safety Audit

1. Are all electrical appliances and outlets in a safe condition e.g. frayed cords, over-loaded lighting circuits? If you are uncertain about the condition of your electrical appliances or household service, have a professional evaluation.
2. Are all flammable liquids stored safely in closed containers in a well ventilated cool area? Cleaning with flammable liquids should be avoided.
3. Are fire hazardous materials (matches) well out of reach of children?
4. Are furnaces and wood burning appliances properly installed, clean and in good working order? Have a professional evaluation.

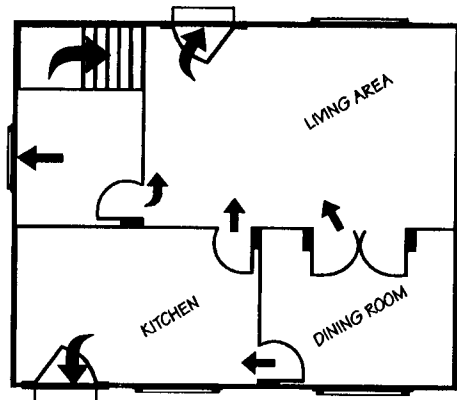
Family Escape Plan

There is often very little time between the detection of a fire and the time it becomes deadly. An escape plan must be developed and rehearsed by every member of the family in order to prevent the loss of life in the event of a fire. The following steps are recommended by the National Fire Protection Association:

1. Make sure your detector or your interior and/or exterior sounders can be heard by all occupants while in their bedrooms with the doors closed.
2. Determine two means of escape from each room. One path of escape should lead to the main point of entry/exit, such as the front door. A second path of escape should be developed, such as through a window, should the first path be impassable. Station an escape ladder at such windows if there is a long drop to the ground.
3. Assure that all bedroom doors are shut while you are asleep. This will prevent deadly smoke from entering in the event of a fire.
4. If you suspect a fire, feel your bedroom door first before opening it. If it feels hot, do not open it and use your alternate escape route. If the door is cool, open it cautiously. Be prepared to slam the door closed if heat or smoke rushes in. Close the bedroom door behind you to slow the spread of the fire.
5. In smoky areas, crawl close to the floor. Hold your breath.
6. Do not stop to collect valuables. Escape quickly and remain calm.
7. Decide on a common meeting place outdoors, away from the house. The meeting place should be near but not on the street.
8. Call the fire department. Use a neighbor's phone, even if you have to wake them up. Do not allow anyone to go back into the house if there is a fire there. Stay together so that you can tell the firefighters where everyone is.
9. Practice your escape plan regularly, several times a year. Practice escaping from your window if that is one of your alternate routes. Practice crawling on the floor. Children learn by doing and following your example.



SECOND FLOOR



MAIN FLOOR